

Common Electrical Systems

Types of AC Power Utilization Systems Up To 480 VAC

The following AC Power System configuration diagrams illustrate proper selection of StediWatt TVSS Models:

Models: S-1120-3G
S-1120-3S
S-1120-3T
S-1120-3SP
S-1120-3ST
S-1120-3BT

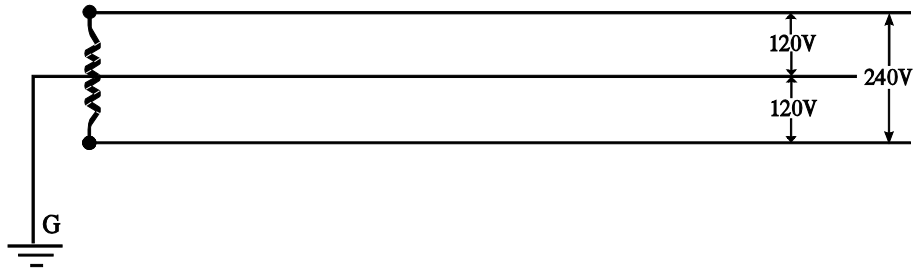
Safety Tested



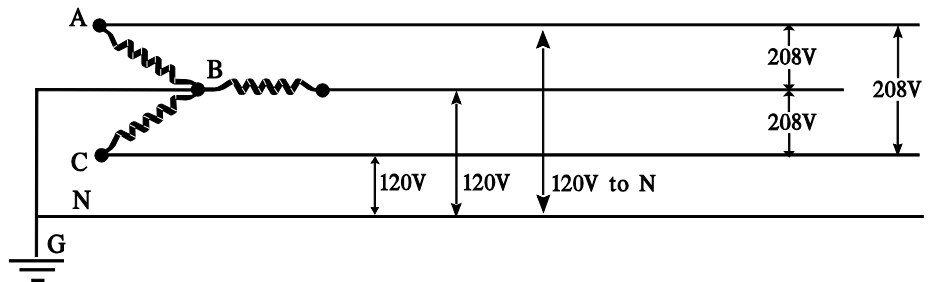
Models: S-1208-4G
S-1208-4S
S-1208-4T
S-1208-4SP
S-1208-4ST
S-1208-4BT

Models: S-1240-4G
S-1240-4S
S-1240-4T
S-1240-4SP
S-1240-4ST
S-1240-4BT

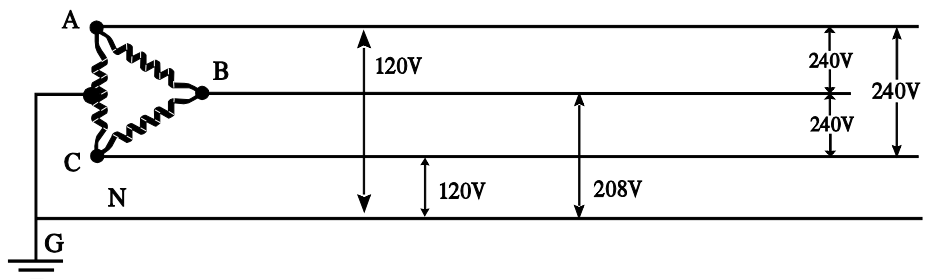
A. Single-phase, 3 Wire 120/240 Volt System



B. Three-phase, 4 Wire WYE, 120/208 Volt System



C. Three-phase, 4 Wire, Hi-leg Delta, 120/208/240 Volt System



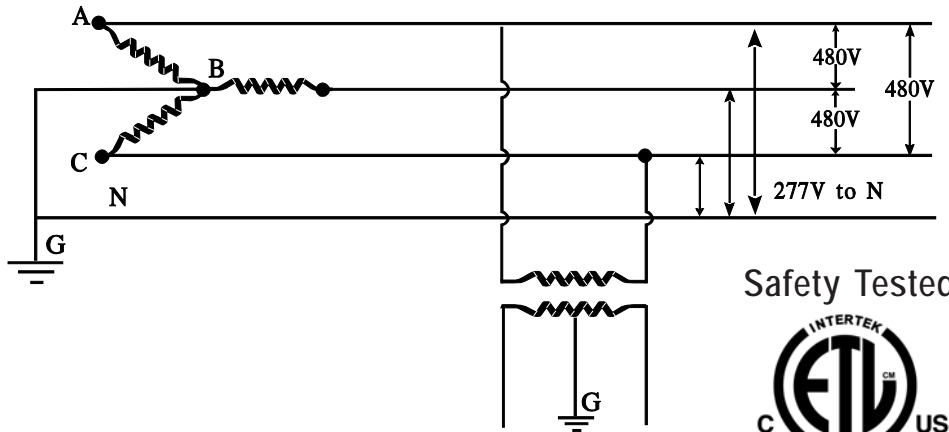
STEDIWATT™ 
Made With Pride In The USA!

Brio Power Products
2005 Lincoln Way East, Chambersburg, PA 17202
Helpline: 800-345-1280

Models: S-1480-4G
 S-1480-4S
 S-1480-4T
 S-1480-4SP
 S-1480-4ST
 S-1480-4BT



D. Three-phase, 4 Wire WYE, 277/480 Volt System



Safety Tested

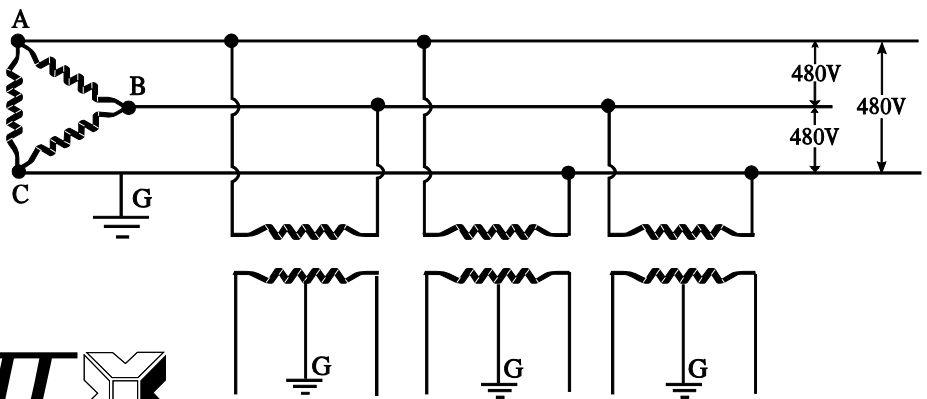


LISTED

Models:

S-1240-3G	S-1480-3G
S-1240-3S	S-1480-3S
S-1240-3T	S-1480-3T
S-1240-3SP	S-1480-3SP
S-1240-3ST	S-1480-3ST
S-1240-3BT	S-1480-3BT

E. Three-phase, 3 Wire Delta, 240 or 480 Volt System



Insulated transformers balanced across phases;
 secondaries must be grounded



The Trusted Name In Pure Power Since 1974!

ELECTRICAL POLLUTION

"Electrical Pollution" is the most costly power problem to ignore and the least costly to eliminate. As AC power is transmitted from the power generating plant, through transmission lines ("The Power Pipeline"), sub-transformer stations and into our homes, businesses and industries, it degrades and accumulates Electrical Pollution all along the way. This power pollution causes many related hazards and problems that can be avoided with a properly designed and properly grounded StediWatt TVSS System.

PURPOSE OF A POWER PANEL SURGE PROTECTOR

To monitor the flow of electricity at predesigned voltage thresholds, while remaining totally passive to the normal flow of current, yet respond at the speed of light to surges and electrical pollution, and dissipate it safely and harmlessly into earth-ground before it zaps your sensitive electronic circuitry and components.

RELATED ELECTRICAL TERMS

120 VAC = USA Standard 120 Volts Alternating Current

60 Hz = USA Standard 60 Cycles per second (Hz = Hertz or Frequency)

Surges/Sags = Short duration, over-voltage or undervoltage fluctuations caused by nearby equipment, or upline loads shifting or cycling on and off.

Spikes/Glitches = Sudden or 'transient' voltage aberrations or interruptions super-imposed over sinewave.

Brownouts = Low or inadequate voltage, caused by excessive loads, or inadequate supply at point of use.

Blackout = Complete interruption of power, whether momentary or longterm

Harmonics = Distortion signals occurring at odd multiples of the fundamental AC power frequency.

Consult Your StediWatt Distributor For Our Full Line Of Power Quality Products!